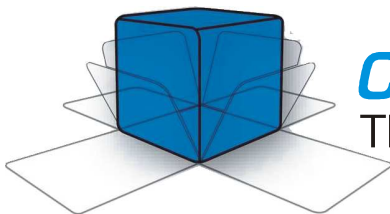


MegaPulse P USB TestMinder

MULTI-PULSE TEST SOFTWARE

Instruction Manual



COMPLIANCE WEST USA

The blue box that tests. And tests.

Dear Customer:

Congratulations! Compliance West USA is proud to present you with the MegaPulse P USB TestMinder Multi-Pulse Test Software. The installation and operating instructions are included in the Manual, so please retain this information for future use.

Thank you for your trust and confidence.

Table of Contents

An Introduction to the MegaPulse P USB TestMinder.....	2
Software Installation and Setup	2
Test operation using MegaPulse P USB TestMinder	3
Manual Operation from the Computer	3
Automatic Operation in Multi-Pulse Mode	5
Technical Assistance	8
AC Setup	9

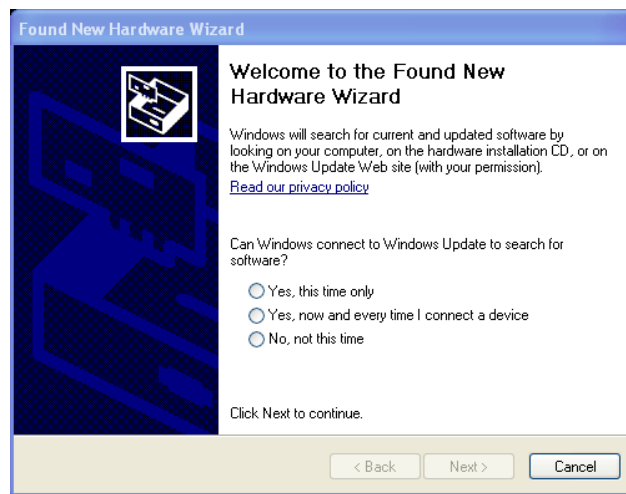
Section 1

An Introduction to the MegaPulse P USB TestMinder

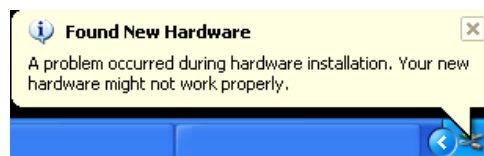
The MegaPulse P USB TestMinder is an option that enables the control of your tester from a Windows-equipped computer. The TestMinder software allows to setup testing parameters as: “time between pulses”, “polarity”, “Voltage”, “Pulse Cycles”, etc. A record of every test can be saved in a computer file as “.txt” or “.csv” format. The “.csv” file can be read by Microsoft Excel.

Software Installation and Setup

1. Insert the CD “Compliance West USA TestMinder MegaPulse P USB” into the drive on your computer and follow the prompts. If the CD does not start automatically, browse to the CD and run the file “Setup.exe.” The files will be installed to the location of your choice.
2. Connect the Megapulse to the computer using the Compliance West supplied USB box. Do not connect the USB cable through a USB hub or a device on your computer like a USB port on your keyboard. A window will pop up on the screen: “Found New Hardware Wizard”.
3. Click on “Cancel”.



4. Ignore the following message “A problem occurred during hardware installation”



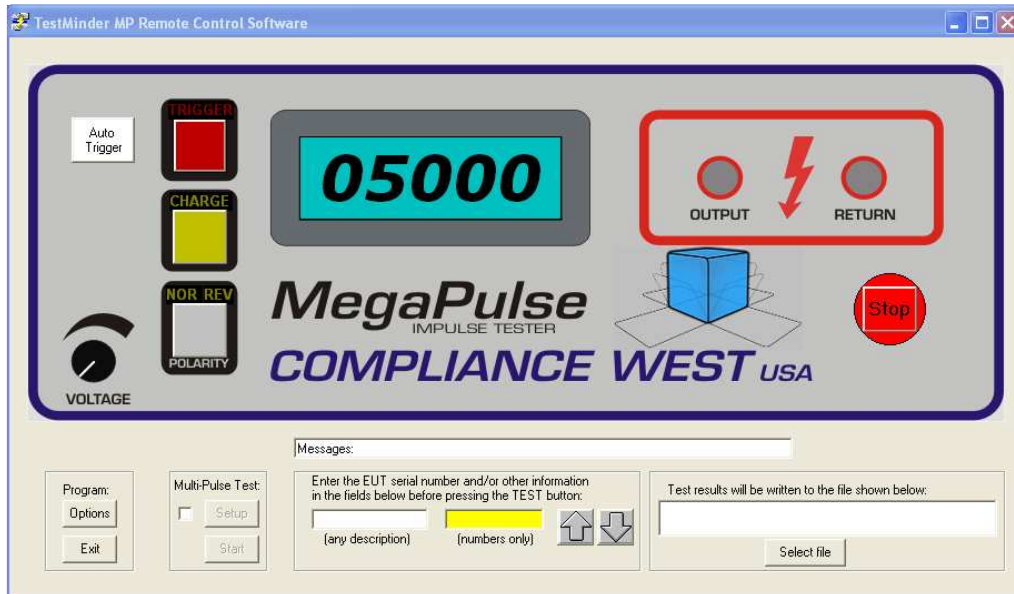
5. Browse to the CD and run the file “Install_Driver.exe.” It will install the necessary drivers.
6. Installation is finished. Run “TestMinderUSB.exe”, following the instructions in Section 2.

Section 2

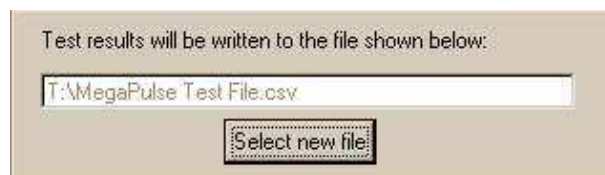
Test operation using MegaPulse P USB TestMinder

Manual Operation from the Computer

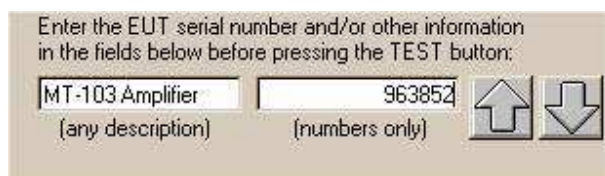
1. Click Start, Programs, TestMinder USB, TestMinderUSB on the Windows main screen to start the program. The following screen is displayed.



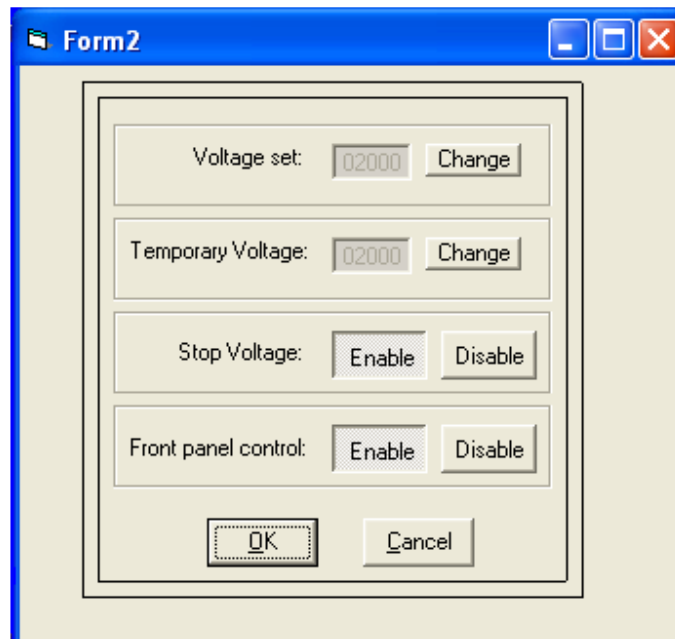
2. The MegaPulse may be run in manual mode from the computer. To conduct a manual test, first setup a name for a file to record the test results: at the lower right of the screen: click the "Select file" button to show the "Open File" dialog box, then select a file name and suffix. ".txt" files can be opened by the windows text editor, ".csv" files can be imported into Microsoft Excel if desired. After the file is selected, the text box will show the file location.



3. For reference, enter a Description and/or the EUT's Serial Number at the bottom center of the screen. The up and down arrows allow the user to increment or decrement a previously entered serial number without retyping.



4. Press the Option button to confirm or change the following settings.



The image shows a software dialog box titled "Form2". It contains four rows of settings, each with a label and a control element:

- Voltage set:** A numeric input field containing "02000" and a "Change" button.
- Temporary Voltage:** A numeric input field containing "02000" and a "Change" button.
- Stop Voltage:** Two buttons labeled "Enable" and "Disable".
- Front panel control:** Two buttons labeled "Enable" and "Disable".

At the bottom of the dialog box are two buttons: "OK" and "Cancel".

Voltage Set: Press “Change” to set a charging voltage limit. The tester will stop charging at this value when “Stop Voltage” is enabled. This charge setting is permanently stored until changed. Every time this value is changed it is also copied to the “Temporary Voltage” setting.

Temporary Voltage: Press “Change” to set a temporary charging voltage limit. The tester will stop charging at this value when “Stop Voltage” is enabled. This setting overrides the “Voltage set” parameter. The temporary voltage setting will be lost when the tester is turned OFF and ON. After the tester is turned OFF and ON, Temporary Voltage will be equal to the “Voltage Set” value.

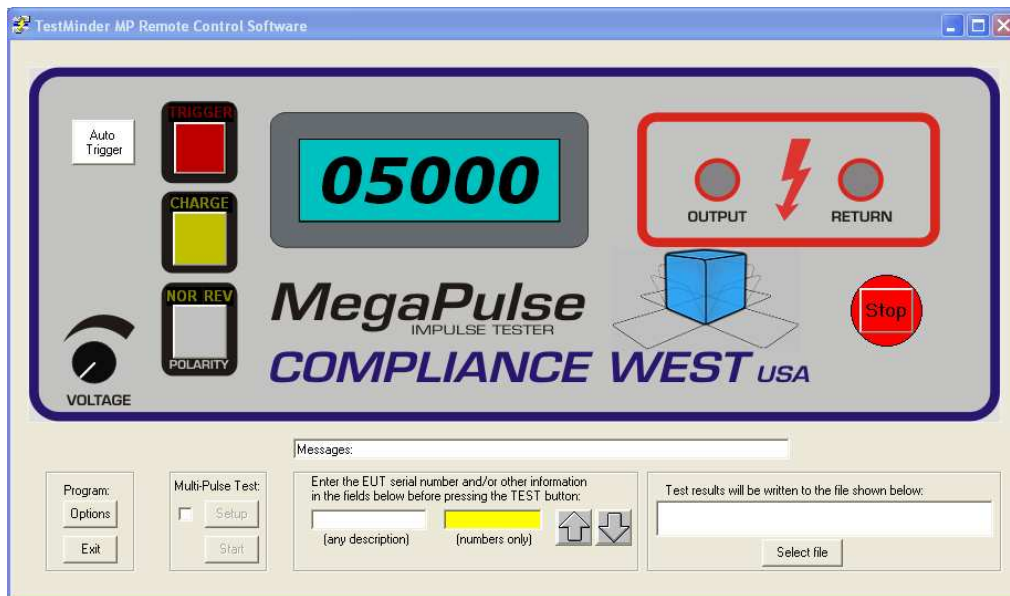
Front panel control: This option disables or enables the front panel buttons on the actual Megapulse tester.

5. To conduct the test, select either positive or negative polarity by clicking on the “Polarity” button. As it is clicked, it alternates between Normal (positive) and Reverse (negative) polarity. Polarity selection must be entered before clicking on the “Charge” button. After the charge button has been clicked, the “Polarity” button is disabled.
6. Press “Auto trigger” button to trigger automatically when the charging voltage limit is reached.
7. Press the Trigger button to discharge the voltage into the EUT.

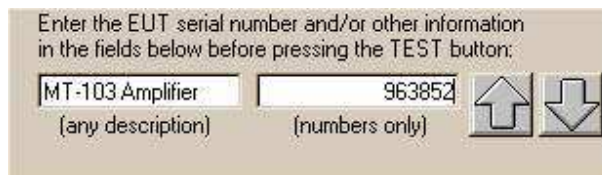
Section 3

Automatic Operation in Multi-Pulse Mode

1. Click Start, Programs, TestMinder USB, TestMinderUSB on the Windows main screen to start the program. The following screen is displayed.



2. The MegaPulse is run in multi-pulse mode only from the computer. To conduct an automatic test, first enter a test result file in the window at the lower right hand part of the screen. First, set up a name for a file to record the test results: at the lower right of the screen: click the “Select file” button to show the “Open File” dialog box, then select a file name and suffix. “.txt” files can be opened by the windows text editor, “.csv” files can be imported into Microsoft Excel if desired. After the file is selected, the text box will show the file location.
3. For reference, enter a Description and/or the EUT’s Serial Number at the bottom center of the screen. The up and down arrows allow the user to increment or decrement a previously entered serial number without retyping.



4. To set the number of pulses and a repetition rate for the multi-pulse test, first click the check box in the “Multi-Pulse Test” field. Two buttons will become available; “Setup” and “Start”. Click on the “Setup” button.



- The setup screen is displayed. This screen allows the user to define up to three test sequences within the following parameters:

Pulses: 0 - 1000 pulses

Polarity: Positive, Negative or Toggle

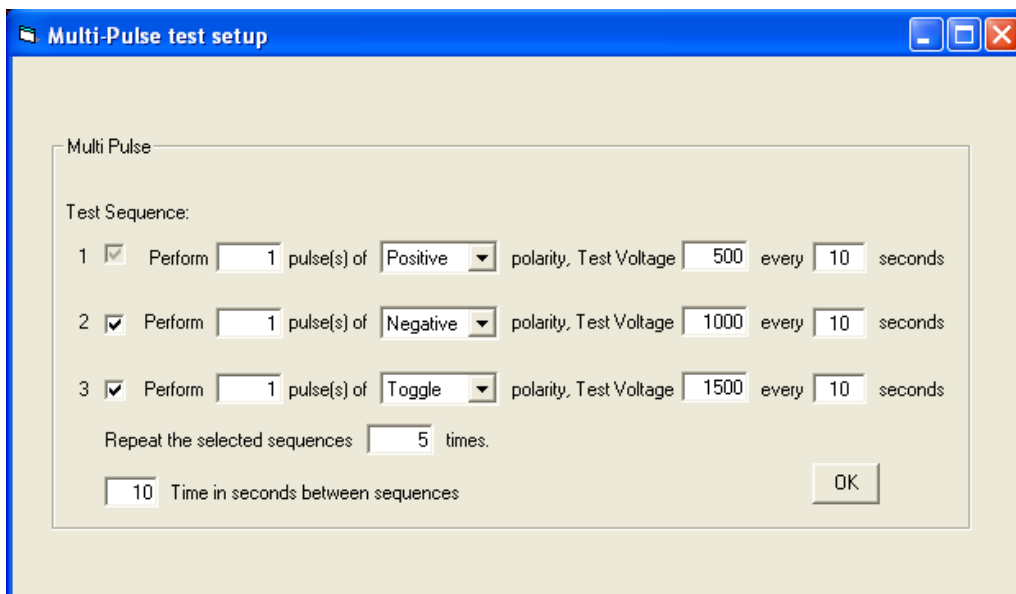
Test voltage: 0 - 30,000V “Depending on the Megapulse model”

Time between pulses: 1- 999 seconds

Repeat sequences: 0- 99 times

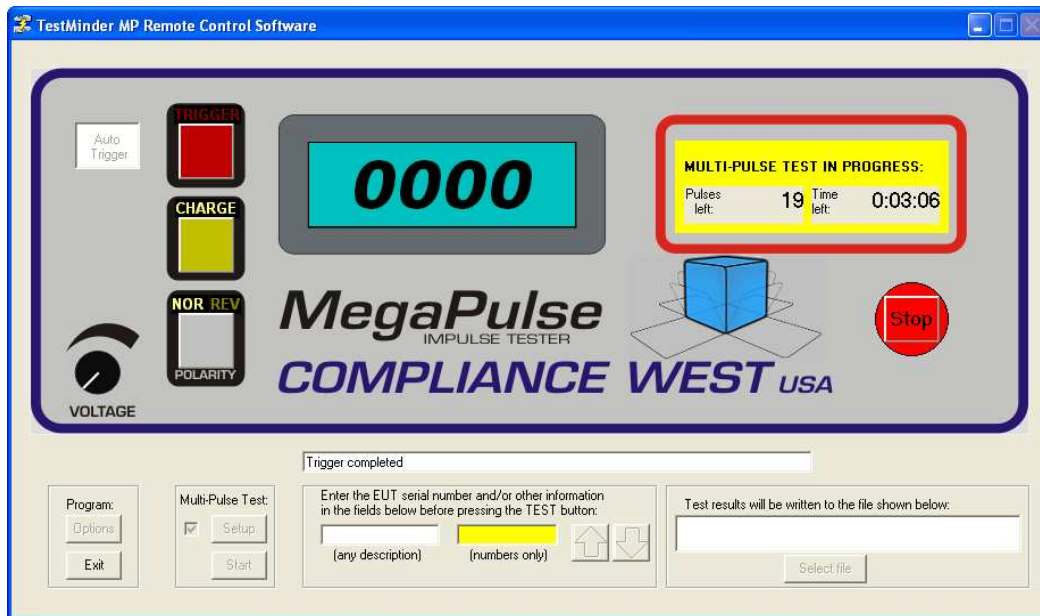
Time between sequences: 0-999 seconds.

NOTE: It is possible to set the time between pulses faster than the charge time of the MegaPulse. Care must be taken to allow enough charging time or the multi-test will be conducted at a lower voltage and stopped. Also if the time between pulses is set too high, there will be dead time after every pulse because the unit will charge and trigger to fast, since it is set automatically to “Auto Trigger” mode when performing multi-pulse tests. To optimize testing, we suggest running manual tests to become familiar with charging times and then optimize the multi-pulse test times. In addition, it is recommended to practice the multi-pulse options with tests at low voltage until operation is familiar.



- After Multi-Pulse Test Parameters are correctly entered, click the “OK” button to return to the TestMinder Main Screen.
- To conduct a Multi-Pulse test, click on the “Start” button in the Multi-Pulse Test field. The test starts immediately (see next figure), and status is shown on the Main Screen. Note that the test can be stopped at any time by pressing the Safety “STOP” button. When a multi-pulse

test is stopped the charge process stops and the Trigger and Charge buttons start blinking until the “GO” button is pressed to clear the emergency state and continue testing. Care must be taken at this point because the tester might still have charge. Make sure to safely discharge the tester before starting a new sequence to avoid any risk.



Multi-pulse test window

Section 4

Technical Assistance

Technical Assistance from Compliance West USA is available:

Phone: (800) 748-6224

Hours: 8:30 AM - 4:30 PM Pacific Time.

Also available on our web site at: **www.compwest.com**

Contact:

Compliance West USA
2120 Jimmy Durante Blvd, Suite 118
Del Mar, CA., 92014
United States of America.

Phone: (858) 481-6454

FAX: (858) 481-8527

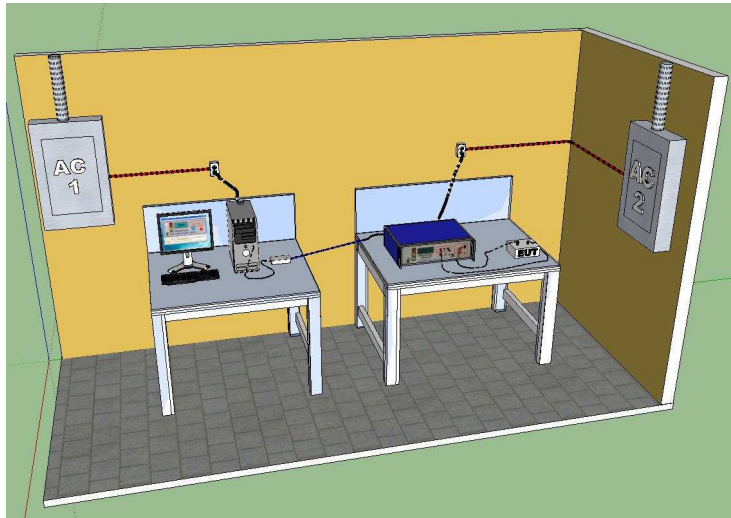
Section 5

AC Setup

WARNING

To prevent damage of the PC you must connect the AC power to a separate line, otherwise the PC can suffer damage due to the High Voltage Output of the Mega Pulse Tester.

Correct Connection



Incorrect Connection

